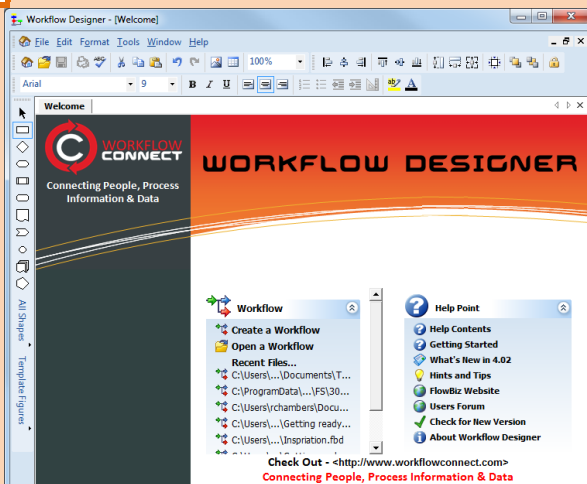


Instead of trying to create one huge workflow, you can link workflows in Workflow Connect and Workflow Designer together using jumps.

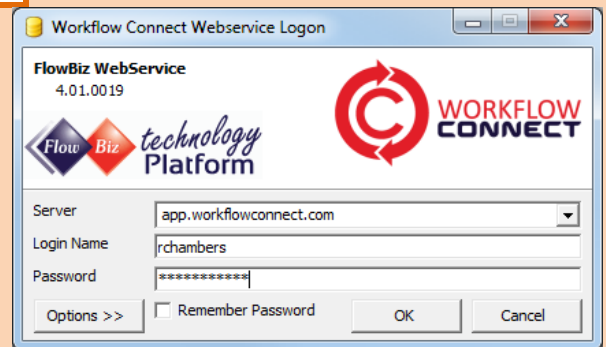
1

If it doesn't exist, create the workflow that you want to jump to in Workflow Designer.
www.workflowconnect.com/download



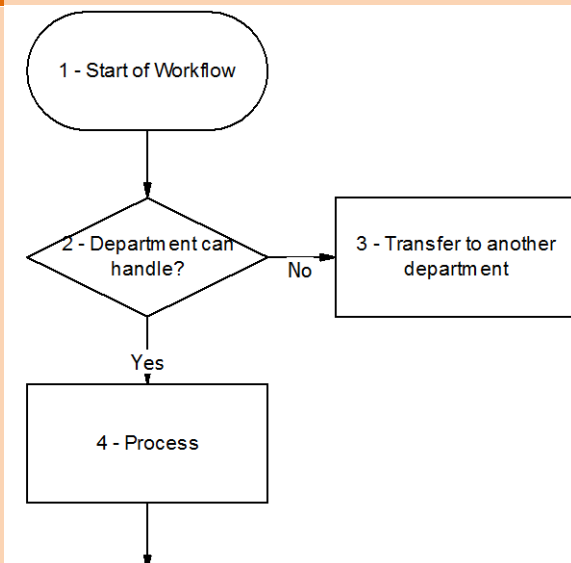
2

Upload it to Workflow Connect.



3

Create or open the workflow where you want to create the jump in Workflow Designer.

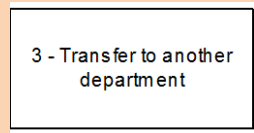


4


Select the step that you want to make a jump by clicking on it.

You can make any step a jump.

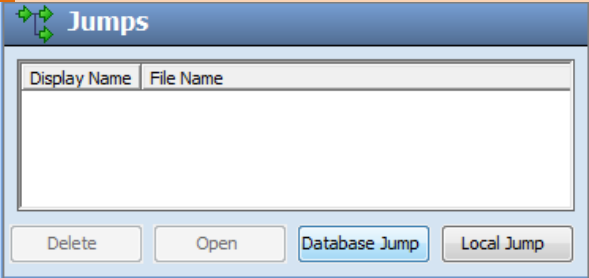
When you make a step a jump that shape will always change to a jump shape (see 8 for customising jump shapes).



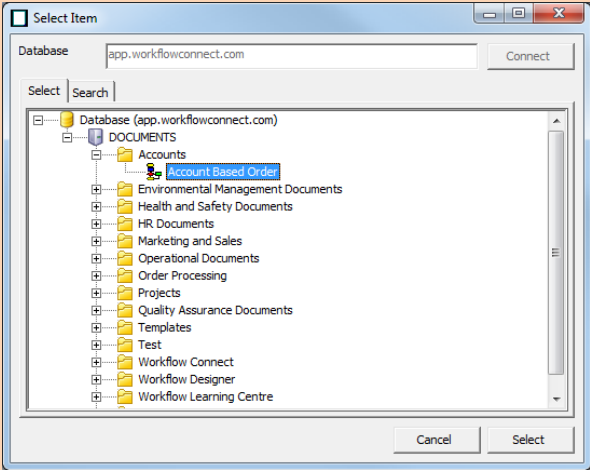
5 Click on the Jumps button in the Workflow Designer Information Pane.



6 Click the Database Jumps button from the Jumps panel.

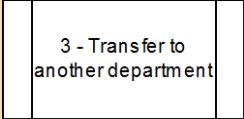


7 You will then connect and browse for the workflow in a similar way to choosing a folder for uploading a workflow. Select the workflow you want to jump to.



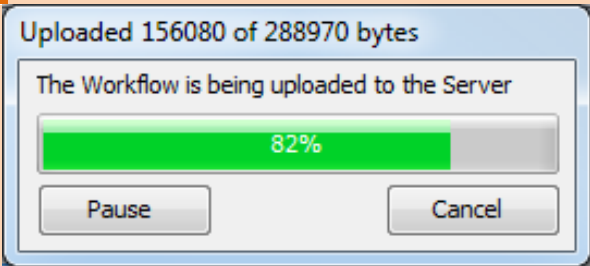
8 The step will be changed to the Jump shape (a rectangle with 2 extra vertical lines in the middle).

By default jump shapes will look like this. When you make any step a jump, it will change to this shape.



If you want to use other shapes you change the shape in the *Figure Properties* panel.

9 You can then upload the workflow to Workflow Connect.



10 You will be able to use the jump within Workflow Connect to jump between charts.

